

# The challenge that social investment brings to the social sector

---

Len Cook, Families Commissioner  
IPANZ, Wellington, June 2017



# Central elements of Social Investment

---

- Accountability centred on the customer (citizen/people) rather than the agency
- Implementation based on a system with defined network leadership roles (Whanau Ora)
- Rethinking the connections between government and NGOs (non-government organisations)
- Evidence informed and information driven
- Long term view of outcomes



# The State and its citizens/people

---



# The System View

---

Implementation based on a system with defined network leadership roles



# The connection between Government and NGOs

(Non Government Organisations)

---



# The Nature and Place of Evidence

---

*Where is the knowledge  
we have lost in information?*

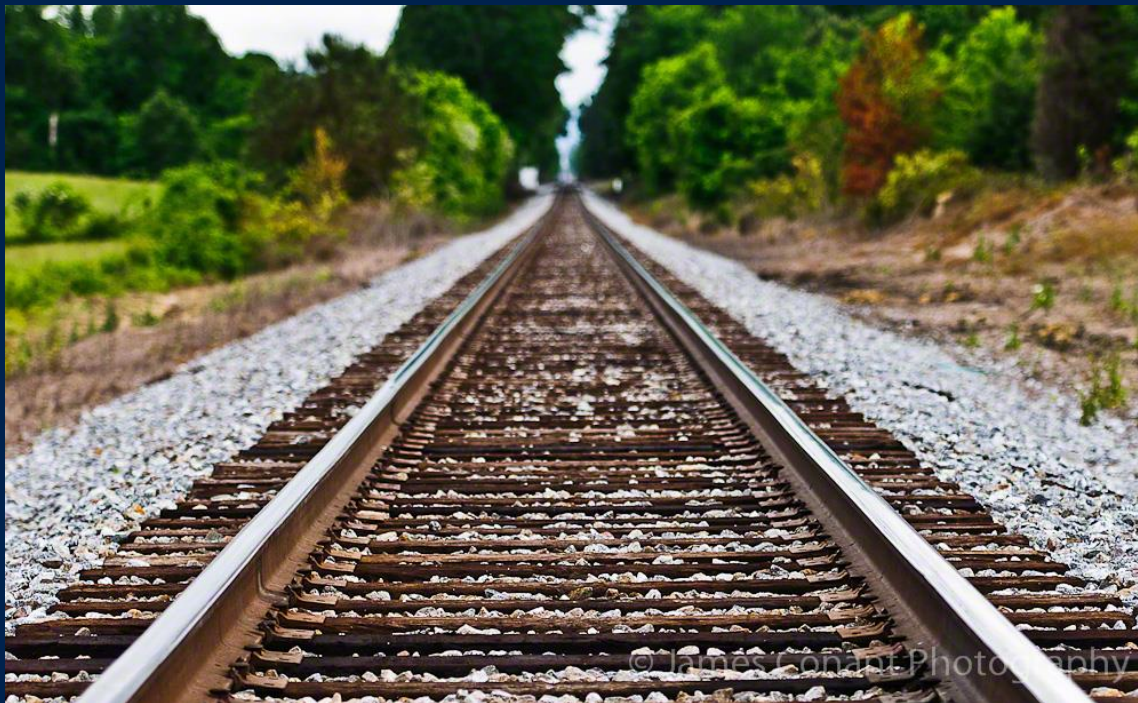
*Where is the wisdom  
we have lost in knowledge?*

T S Eliot - Choruses from the Rock

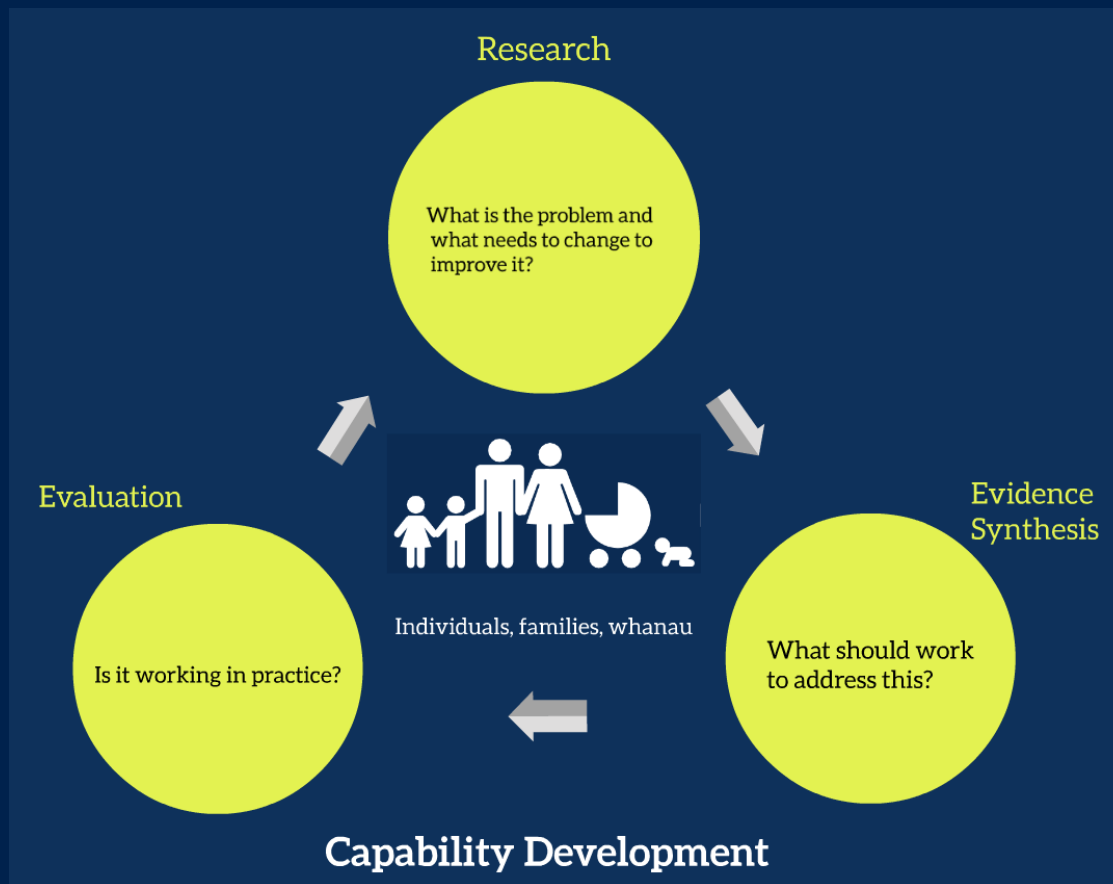


# Longer term views of outcomes

---



# Longer term opportunities for social services advancement





# The Village Watchman - a quote

---

*“The Government are very keen on amassing statistics.*

*They collect them, add them, raise them to the nth power, take the cube root and prepare wonderful diagrams.*

*But you must never forget that every one of these figures comes in the first instance from the village watchman, who just puts down what he damn pleases.”*



- Sir Joseph Stamp, Inland Revenue Department, (England 1880-1941)