

Implementing social investment



Dorothy Adams

Social Investment Unit

June 2016

SIU | SOCIAL
INVESTMENT
UNIT

What is social investment?

Social investment is about improving the lives of New Zealanders by applying rigorous and evidence-based investment practices to social services

***Social investment is about people,
not agencies.***

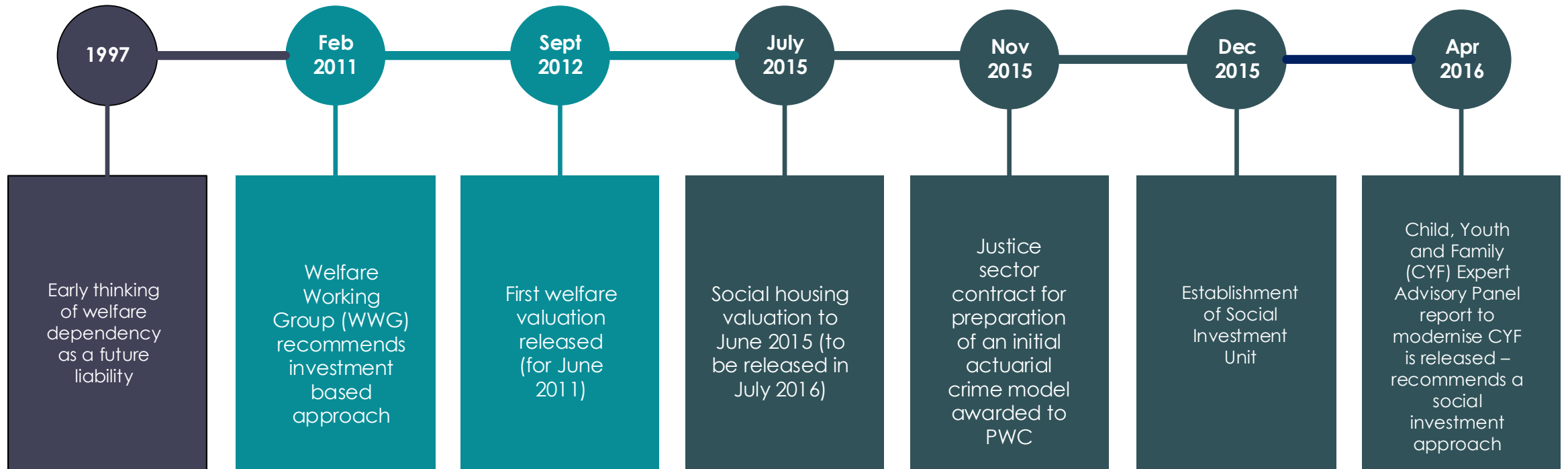
***It's about understanding whether public
services to New Zealanders are
delivering the right results
– for individuals and for the country.***

Evolution of social investment

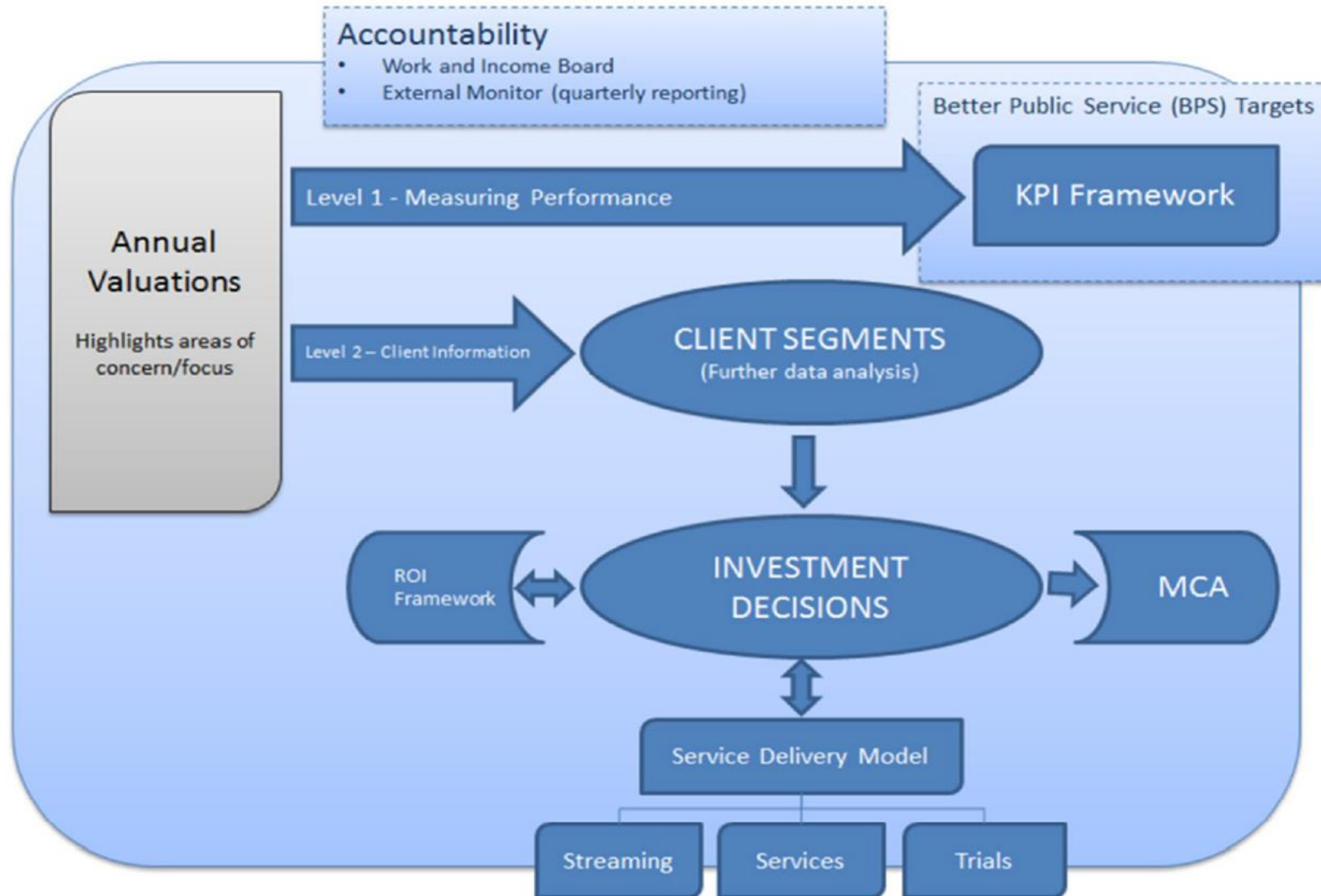
Early thinking

MSD experience

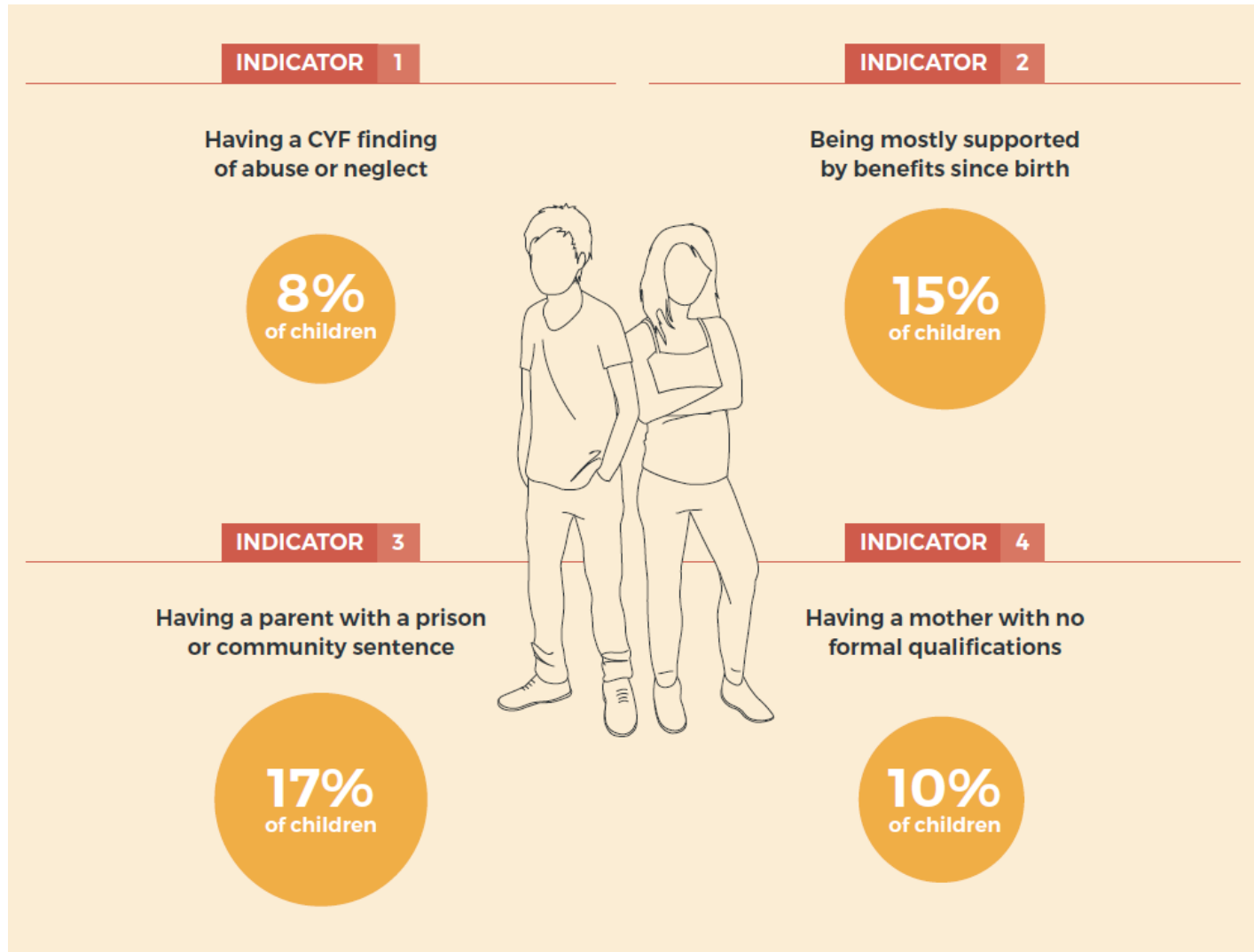
Recent developments



Welfare investment approach



Why an investment approach matters



What now?

We have established the Social Investment Unit to deliver the tools and infrastructure required to support a social investment approach and provide independent cross-sector advice

Our direction is set

To improve the lives of New Zealanders by investing in services we know work and managing the longer-term costs to Government

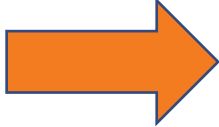
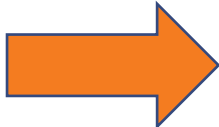
We'll enable a collective approach to investing in what works to improve the lives of New Zealanders, creating lasting change

The Social Investment Unit

The Social Investment Unit (SIU) is an agency-neutral ‘engine room’ that is driving and coordinating the shift towards social investment

ADVISE – PARTNER – DELIVER

We're working differently

- From 'Agency' view  To 'Lifetime' view
- From 'Spending'  To 'Investing'
- Evidence-based
- Continually learning
- Improving investment decisions

Components of the SIU

Data

Infrastructure



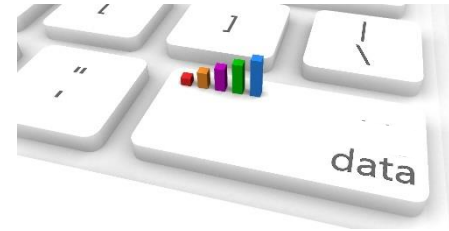
Innovation

Lab



Evidence

Insight



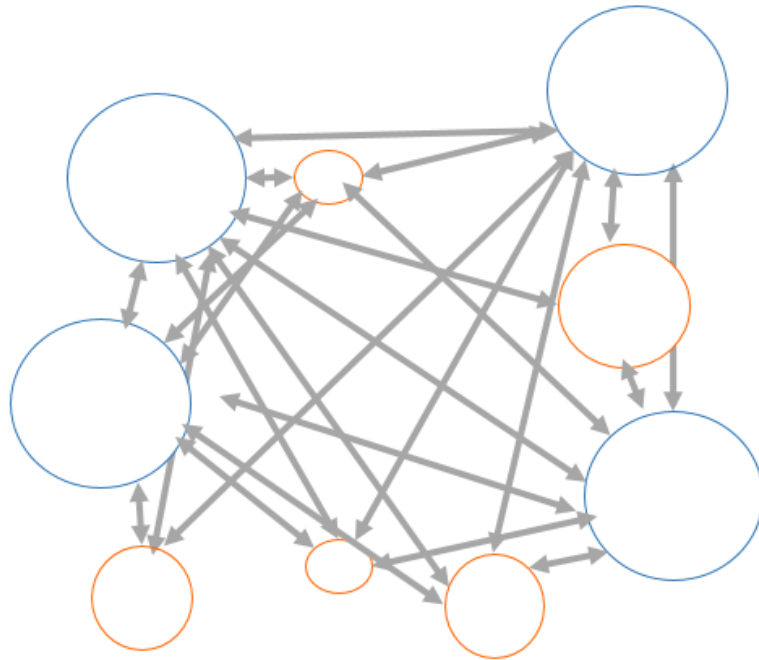
Investment

Advice





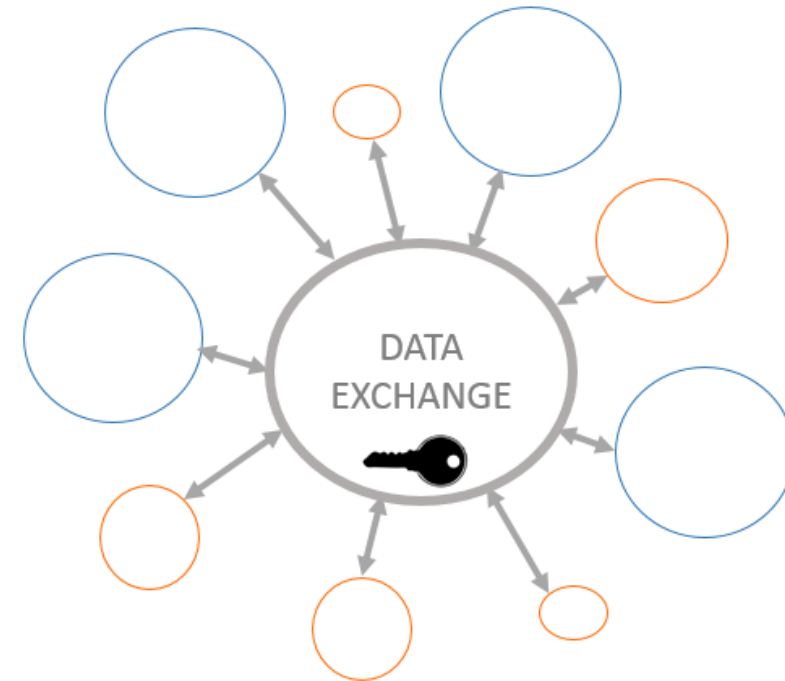
← Embedding change →

Data highway



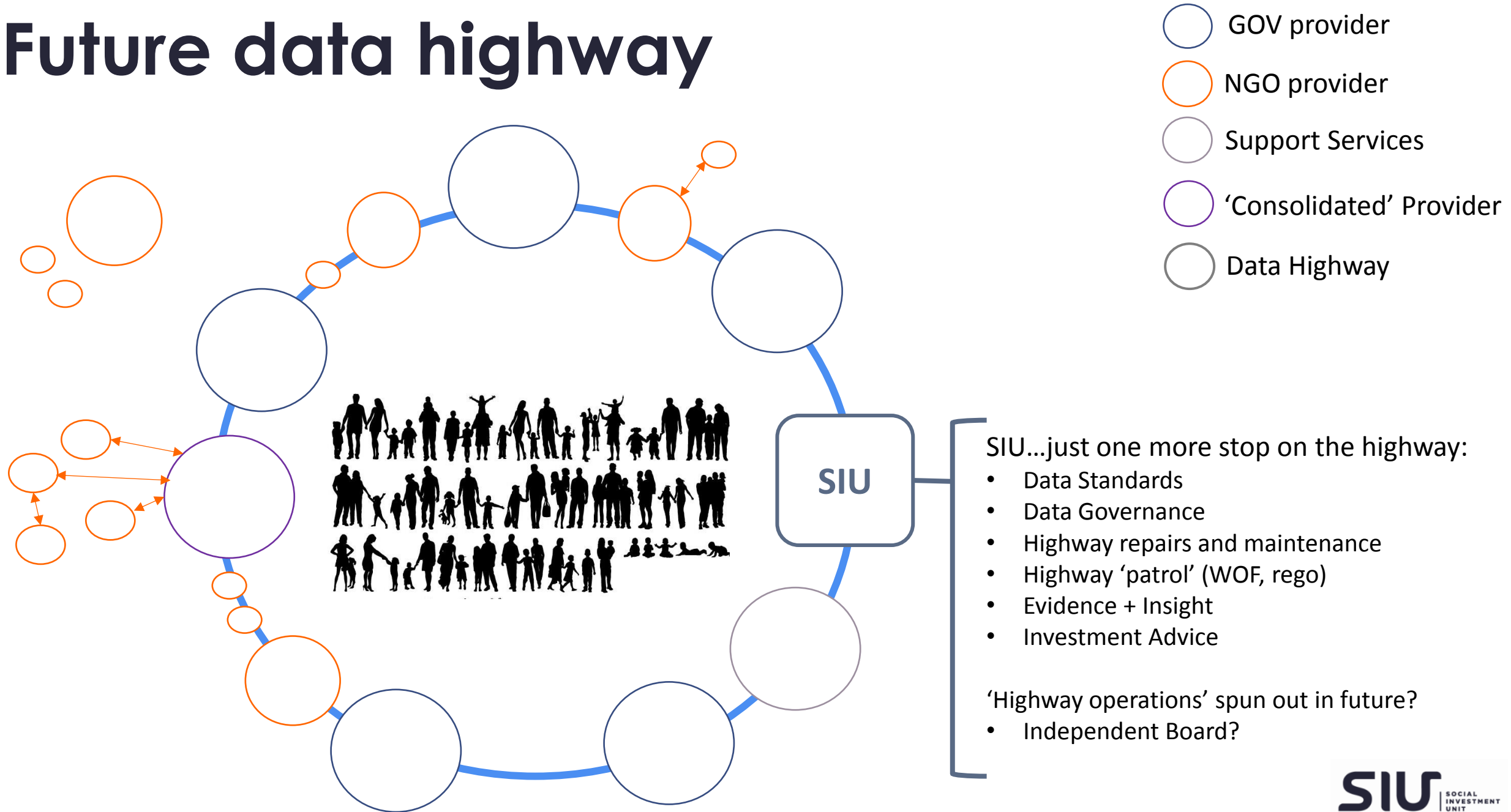
COMPLEXITY =  cost + time
participation + access
+ system security

 GOV provider
 NGO provider



SIMPLICITY =  participation + access
+ security
=  cost

Future data highway



Building an evidence system

Bringing together evidence on policy matters and populations in a way that's easily accessible, to ensure evaluative information is used in decision-making

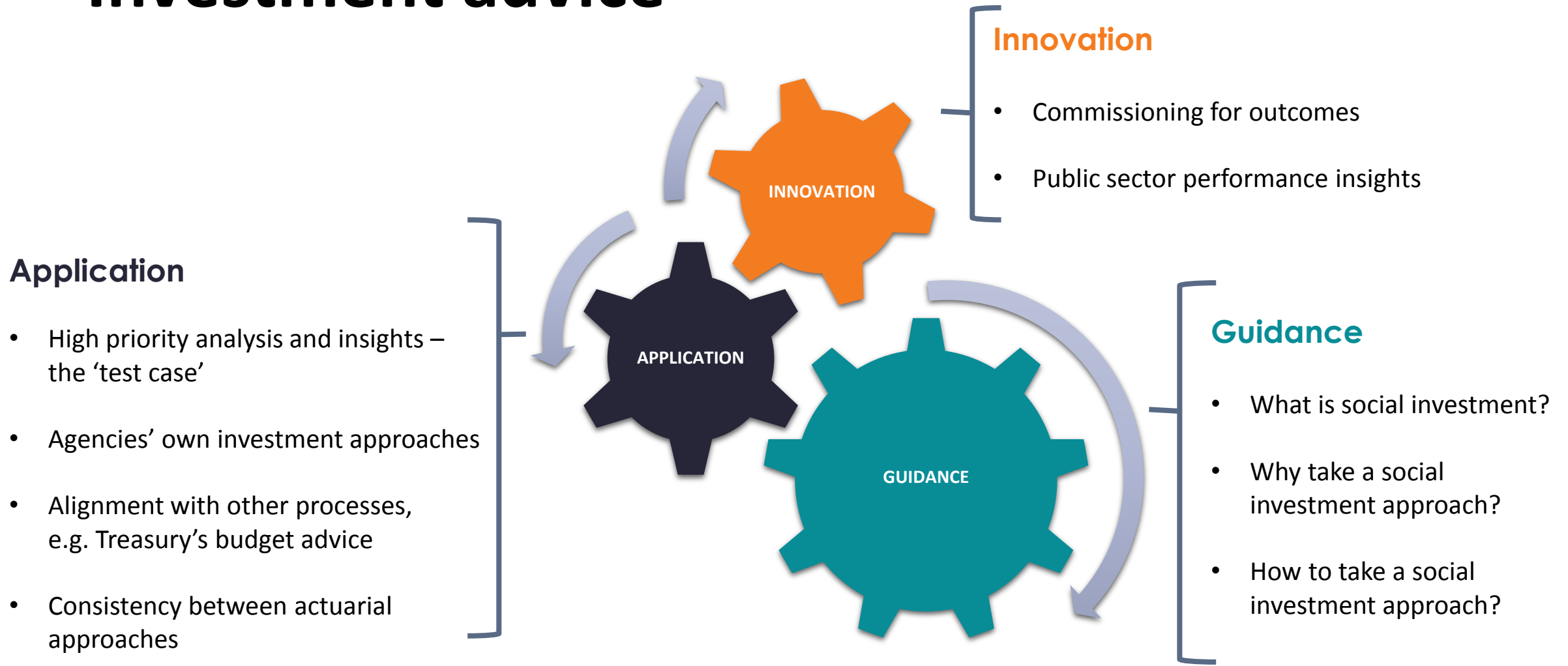
Evaluation activity



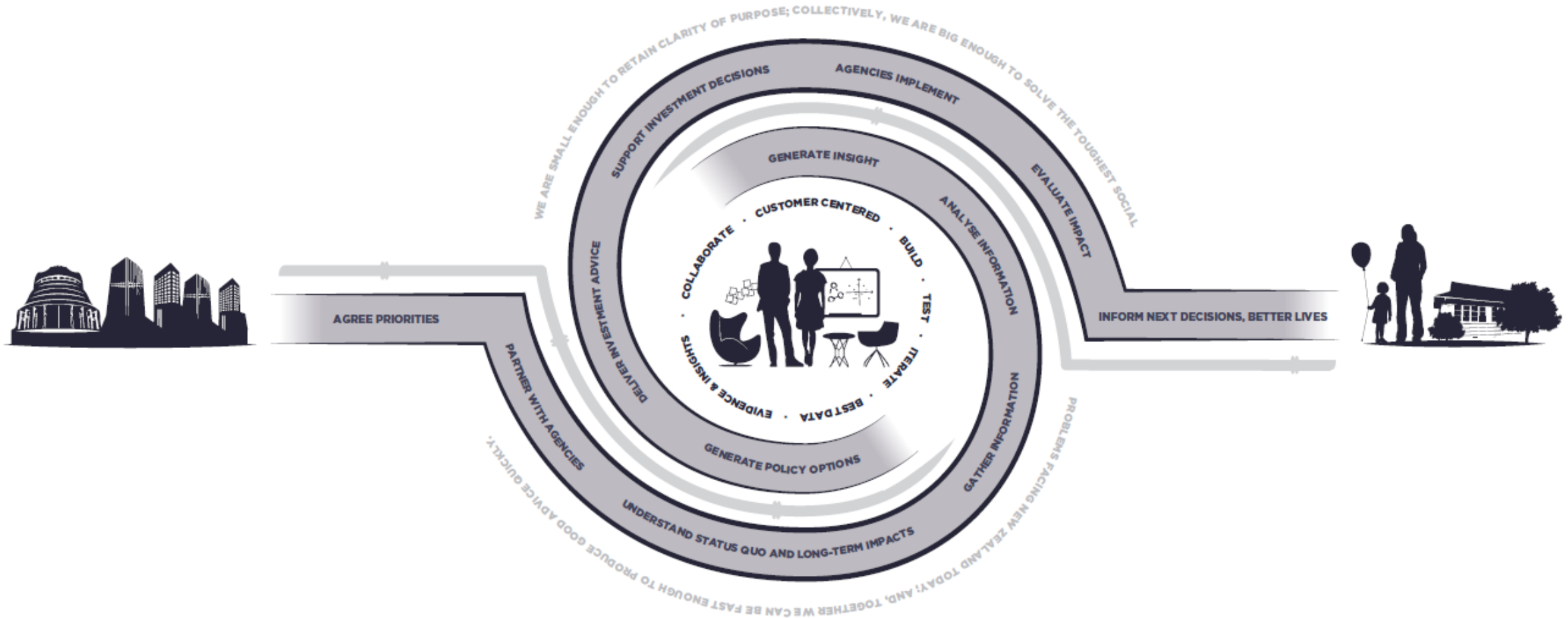
Social investment approach to decision-making






Investment advice



What will the system look like?



Lots of work still to be done

| | | | |
|---|---|--|--|
| Scope Which investments does the model apply to? | Funding model Does Social Investment fit within current appropriation funding model? | Levels of application How far into the current system does this go? | Outcome measures How is the return on investment defined?  |
| Data platforms Where will the information be stored? How will it be shared?  | Analytics Who analyses the data? How is this done consistently?  | Institutional context for delivery Is Social Investment to be delivered under current institutional arrangements or a new model? | Role of each agency in the end-state Each agency has different pressures and levels of maturity |

A black and white silhouette illustration of a community scene. The scene is divided by a horizontal line representing the ground. Above the line, on the left, is a school building with a cross on its roof, a playground with a swing set, and a 'SCHOOL' sign. In the center, a family (adult and child) holds a balloon. To the right is a house with a tree and a slide. Below the ground line, the scene is reflected, showing inverted buildings, a person at a computer, a person with a laptop, and a large bowl.