

# A “WHOLE-OF-SOCIETY” APPROACH THE FUTURE OF REFUGEE AND MIGRANT INTEGRATION



Meghan Benton, Senior Policy Analyst

[m.benton@migrationpolicy.org](mailto:m.benton@migrationpolicy.org)

@meghan\_benton

Friday 17 February 2016

# Overview

1. About MPI
2. Definition of integration
3. Current trends
4. Future trends
5. Five big policy ideas



# About MPI

- Independent, nonpartisan, nonprofit think tank in Washington, DC dedicated to analysis of the movement of people worldwide; founded in 2001.
- Sister institute Migration Policy Institute Europe founded in Brussels in 2011.
- When managed well, migration brings benefits to immigrants and their families, communities of origin and destination, and sending and receiving countries.

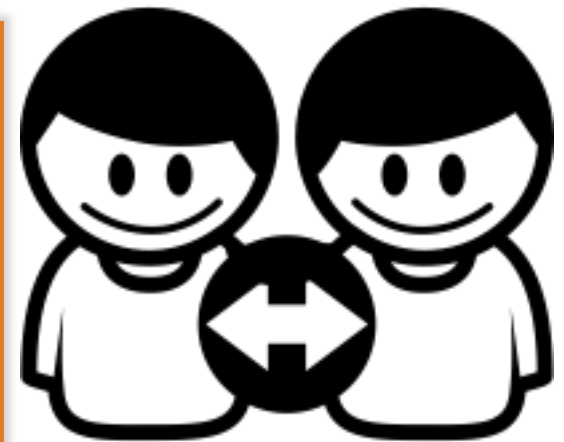
# Defining integration

A “dynamic, two-way process of mutual accommodation by all immigrants and residents of Member States.”

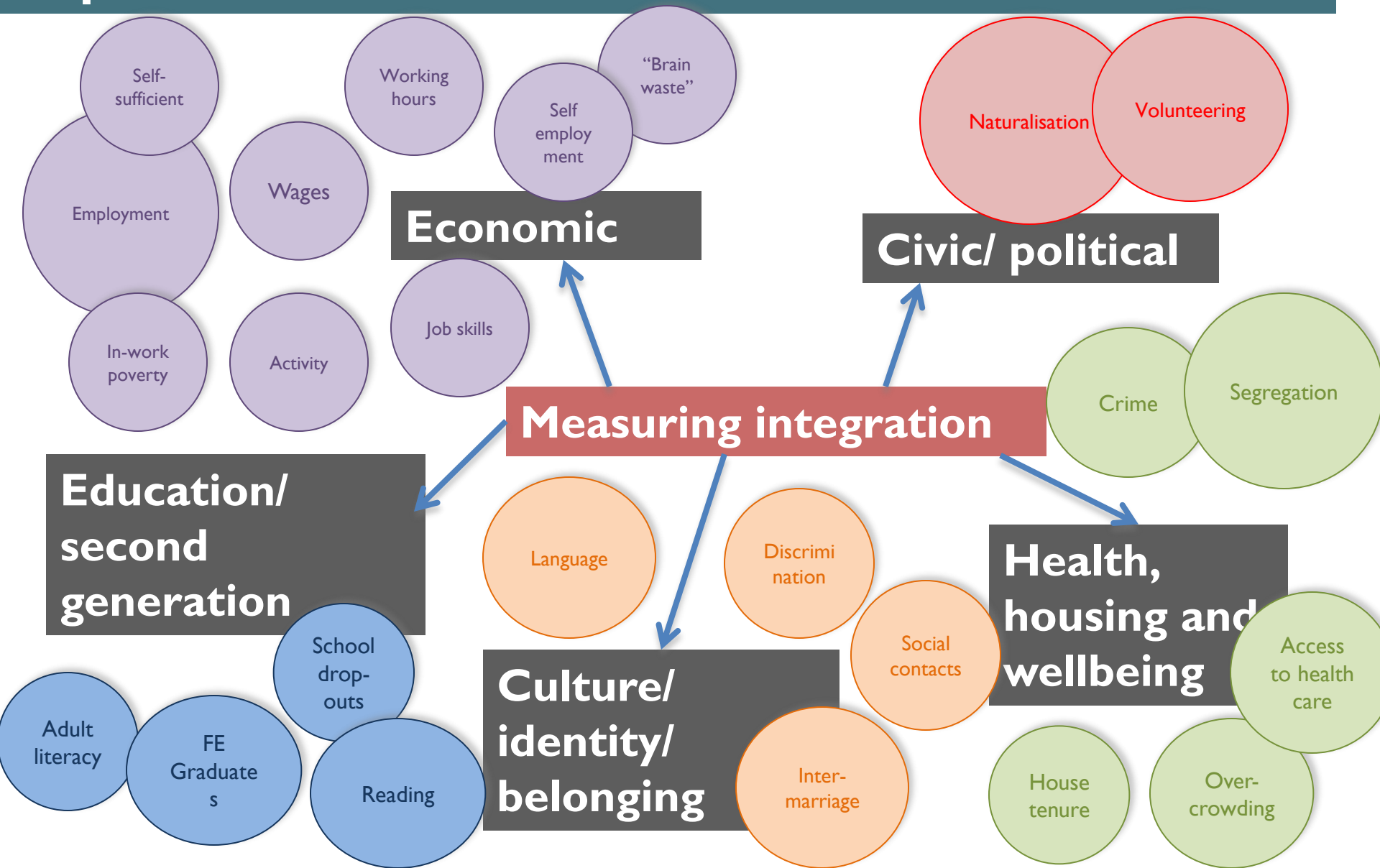


The “the process by which members of immigrant groups and host societies come to resemble one another .”

“The active participation of immigrants and their children in the labour market and, more generally, in public life.”



# Most people agree that integration has a number of important dimensions...

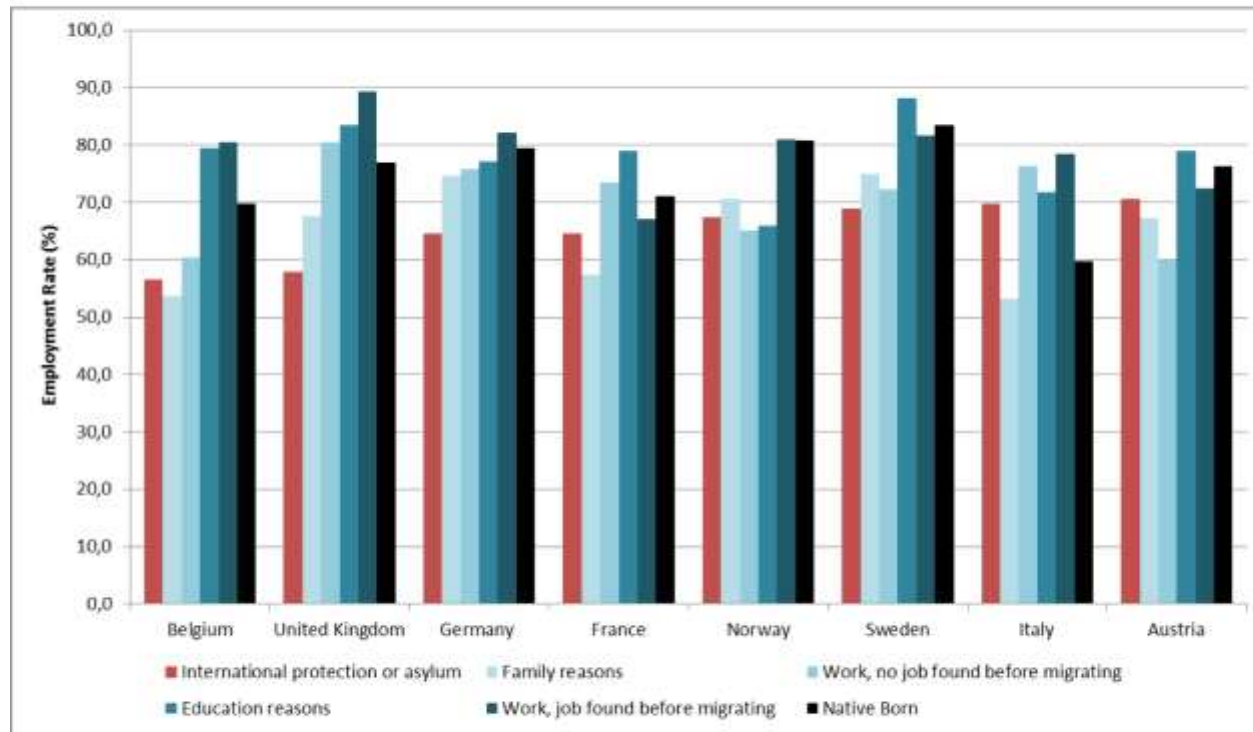




# **CURRENT TRENDS**

# Labour market convergence has not happened...

**Figure 1: Employment rate for immigrants aged 20-64 residing for 10 years or above in selected EU Member States, by reason for migration, and corresponding figures for natives, 2014**



Source: Eurostat, 'Employment rate of first generation of immigrants by sex, age, years of residence and reason for migration [lfsa\_14/1empr],' accessed April 11, 2016, [http://ec.europa.eu/eurostat/web/products-datasets/-/lfsa\\_14/1empr](http://ec.europa.eu/eurostat/web/products-datasets/-/lfsa_14/1empr); Eurostat, 'Employment rates by sex, age and country of birth (%) [lfsa\_ergacob],

... at least for some groups

# **“Brain waste” is still a huge problem...**

**29% of refugees and 24% of foreign-born (in general) in the United States have a university degree but are unemployed or in low-skilled work.**

**Immigrants with a university degree are 10 percentage points less likely to be in work relative to similarly educated natives in southern Europe, Belgium, France, the Netherlands and Sweden.**

# Large-scale inflows exacerbated these challenges...

- **Scale**

- Over 800,000 registrations in Germany in 2015 - >1.2 per cent of its population
- 162,550 asylum applications in Sweden - 1.7 per cent of its population
- Finland increase of 800 per cent in asylum applications from 2014 to 2015

- **New destinations**

- Places unused to migration changed dramatically
- Perception of unfairness and uneven distribution



# FUTURE TRENDS

# I. Changing labour markets

- 47% of jobs in US economy at risk of automation by 2050 (Frey and Osborne, 2013)
- Automation of middle-skilled jobs
- Jobs most resistant to automation involve creativity or emotional intelligence
- More freelance and flexible work

Forbes / Entrepreneurs

FEB 26, 2014 @ 11:45 AM 39,902 VIEWS

## Five Reasons Half of You Will be Freelancers in 2020

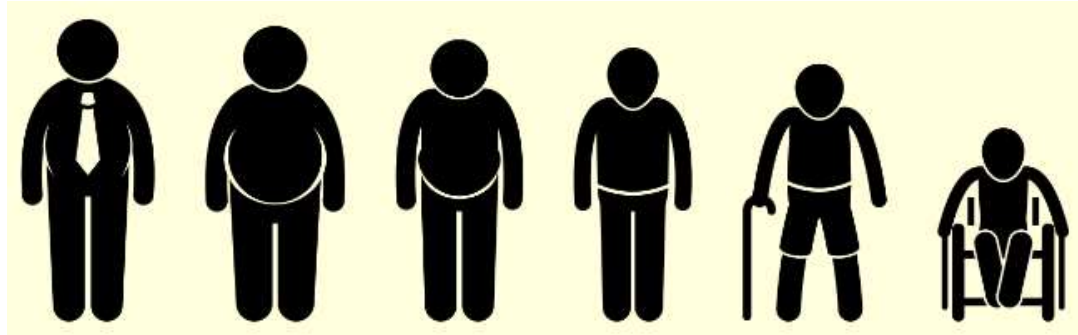
WIRED WELL

### An Uber for Doctor Housecalls

By JENNIFER JOLLY MAY 5, 2015 12:01 AM 36 Comments



## 2. Ageing and demographic change



- 1950: 205 million people aged 60 or over worldwide
- 2000: 606 million people aged 60 or over worldwide
- 2020 (projection): 2 billion people aged 60 or over worldwide
- 1/3 babies born in Britain today are expected to live to 100

### 3. Social fragmentation and declining trust



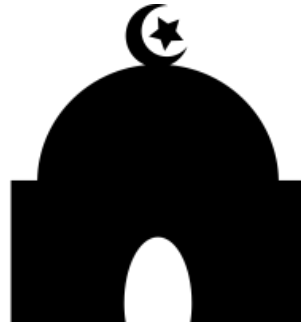


# A 'WHOLE OF SOCIETY' APPROACH

# I. A “Whole of Society” Approach



Employers



Community groups and  
civic society



Sharing platforms and  
volunteers

## 2. Collective problem-solving



Techfugees

The “digital” civil society



Challenge prizes



New public-private partnerships

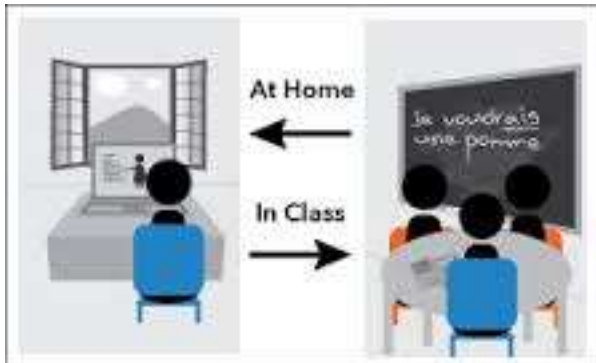


### 3. Digital tools for “mainstreaming” integration



Adapting services to both “mobility” and “diversity”

Supporting language learners in the classroom



Personalised services for diverse needs

## Welcome to GOV.UK

The best place to find government services and information  
**Simpler, clearer, faster**

## 4. Beyond traditional jobs

Fast tracks to retraining  
and credentialling



Entrepreneurship

Remote work and digital  
platforms

**work***keer*

THE JOB BOARD FOR REFUGEES

Eldercare and volunteering



amazon mechanical turk

## 5. Data driven integration



**Predictive analytics and  
early intervention**

**Data sharing across  
government**

THE  
BEHAVIOURAL  
INSIGHTS TEAM.



**Patchwork**

**What  
Works  
Network**



**An “evidence turn” for  
integration?**

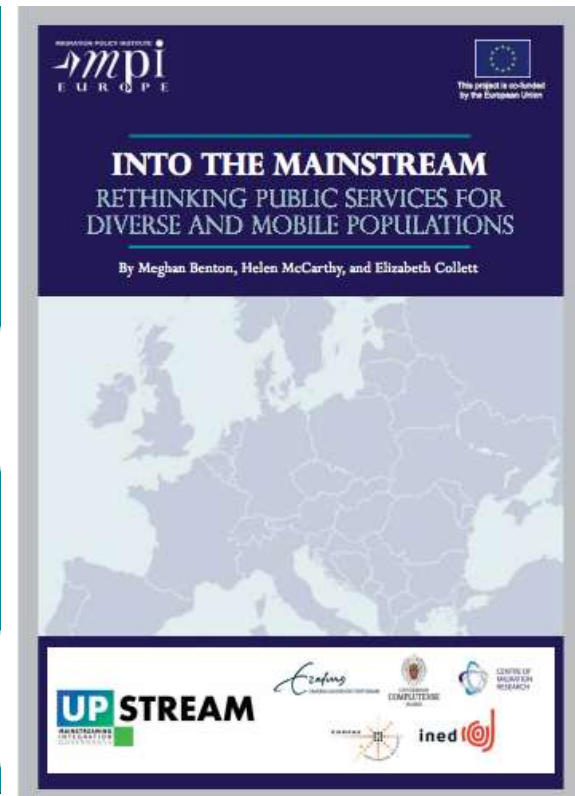
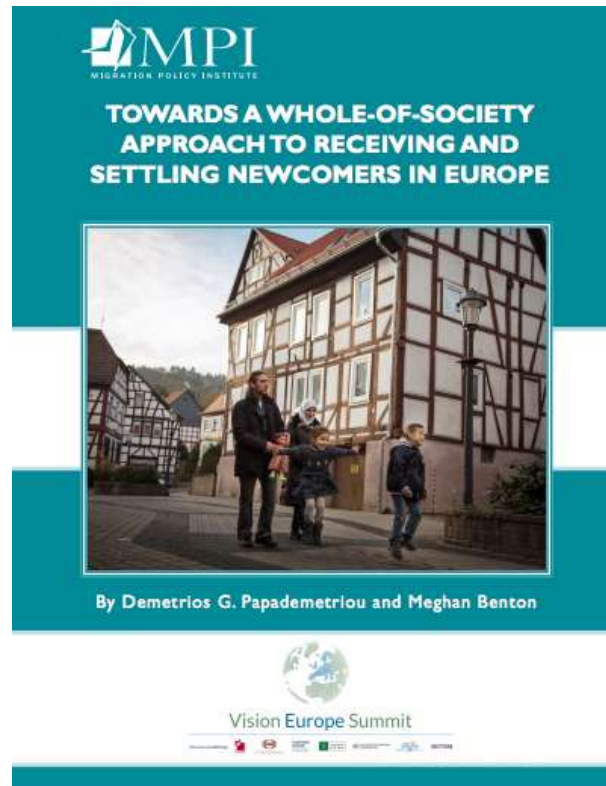
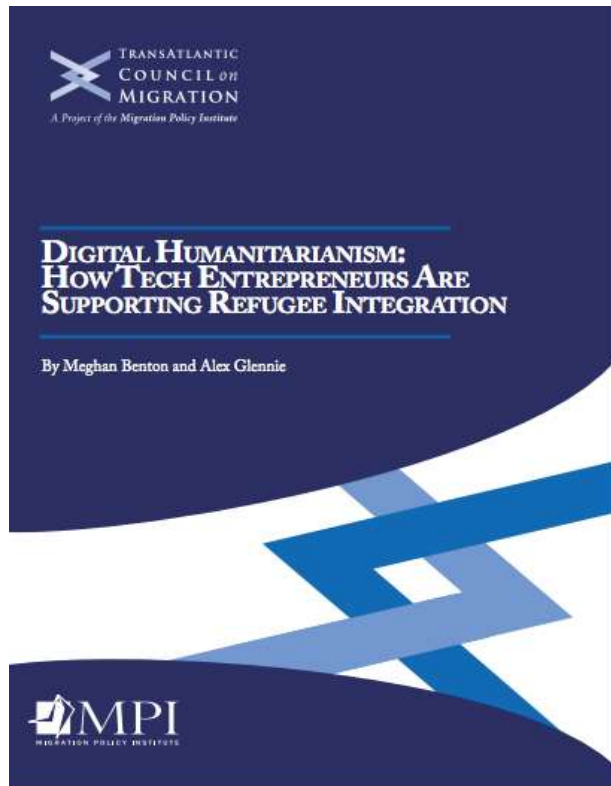


**Building a New Life in Australia:  
The Longitudinal Study of Humanitarian Migrants**

# Conclusions

- Challenges and opportunities...
- Technology is making it possible to do more with less
  - But much of this possibility is to do with *citizen action*
- We need to involve the widest possible constituency in integration
  - But we will have to manage the risks

# For More Information





# Questions?

<http://www.migrationpolicy.org/topics/refugee-asylum-policy>

[mbenton@migrationpolicy.org](mailto:mbenton@migrationpolicy.org)

@meghan\_benton

For additional information and to receive updates: [www.migrationpolicy.org/signup](http://www.migrationpolicy.org/signup)

T: (202) 266-1925

F: (202) 266-1940

**[www.migrationpolicy.org](http://www.migrationpolicy.org)**