



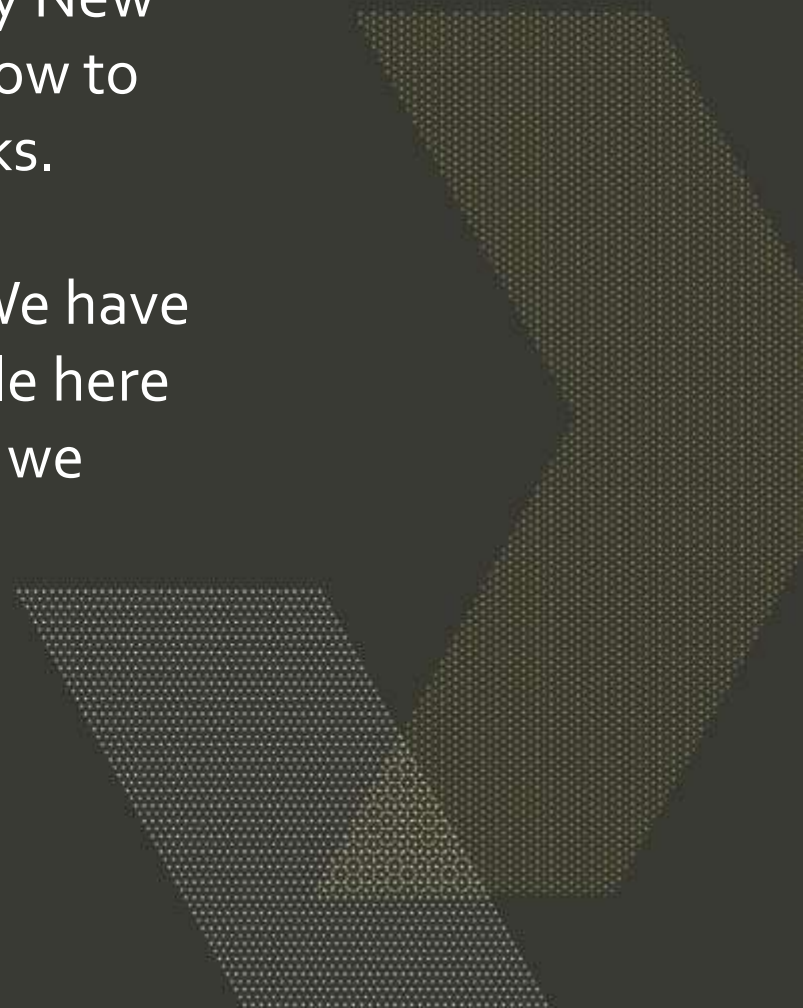
IPANZ Presentation

Kat Norman, Senior Stakeholder and Engagement Advisor
14 August 2018



As a government-enabled organisation, CERT NZ's job is to advise everyday New Zealanders and organisations on how to avoid or manage cyber security risks.

We're uniquely placed to do that. We have privileged access to data and people here and internationally. The more data we have, the more we can achieve.



About us

- ✓ **Location:** CERT NZ is a branded business unit of the Ministry of Business Innovation and Employment, based in Wellington
- ✓ **Size:** 16 staff plus the Contact Centre
- ✓ **Minister:** Minister for Communications, Hon Clare Curran
- ✓ **Funding:** The Government has invested \$22.2m over four years from Budget 2016 to build and fund CERT NZ



CERT NZ's core functions



THREAT IDENTIFICATION

We analyse the international landscape and report on threats.



VULNERABILITY IDENTIFICATION

We analyse data and report on vulnerabilities in New Zealand.



INCIDENT REPORTING

We triage reported incidents and make referrals.



RESPONSE COORDINATION

We lead the response to some incidents, coordinate the response to others and we support the national emergency response process.



READINESS SUPPORT

We help to define best practice, and raise awareness of cyber security risks, mitigations and impacts.

Who does CERT NZ serve?

- ✓ CERT NZ works to support all New Zealanders, from everyday New Zealanders, to businesses of all sizes, to government agencies.



We work across the cyber security ecosystem

- Not all incidents reported are within our scope. But as part of our role in the ecosystem, we help people get to the right place.
- We work closely with incident “referral” partner organisations including:



- CERT NZ also plays a connecting role working alongside or coordinating with partner agencies to resolve incidents where required.

CERT NZ Reporting Tool

Responding to **cyber security** threats in New Zealand.

CERT NZ is your first port of call when you need to report a cyber security problem. We support businesses, organisations and individuals affected by cyber security incidents, and provide trusted and authoritative information and advice.

IT specialists

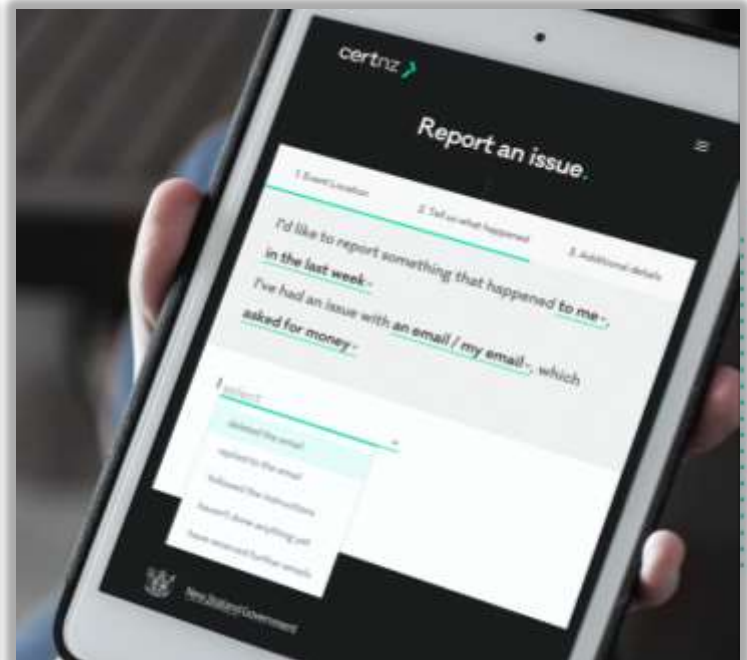
[Advisories](#) [Guides](#)

[Report an incident](#)

Businesses and individuals

[Recent threats](#) [Explore](#) [Guides](#)

[Report an issue](#)



CERT NZ Reporting Tool cont...

1. Event Location

2. Tell us what happened

3. Additional details

I'd like to report something that happened to me ☐,
in the last week ☐

I've had an issue with an email / my email ☐, which
asked for personal or account details ☐

I followed the instructions & have received further emails
☐ and I'm worried I've done the wrong thing ☐. The issue
is being resolved ☐

This sounds most like phishing.

Phishing is a type of scam. The sender pretends to be a trustworthy organisation — like a bank or government agency — in an attempt to get you to provide them with personal information, particularly financial details. If you can tell us a bit more about what's been happening, we'll see if this can be investigated further and will let you know what your next steps are.

Types of data



Incident data

Data about when an attacker has bypassed your controls



Threat data

This includes new threats or threat trends targeting your organisation, identified through incident analysis or logs



Vulnerability data

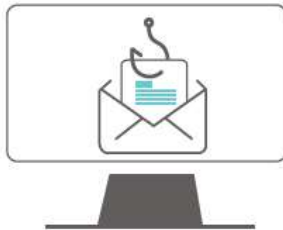
These can be discovered in a product or service, including 3rd party products you might be using. If exploited, vulnerabilities can have a high impact on New Zealanders

What CERT NZ saw in 2017...

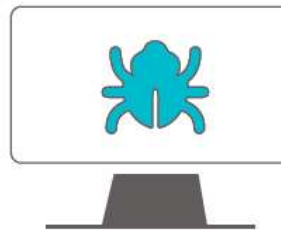
 **1,131**
incidents
reported

 **Over \$5.3 M**
in total financial
loss reported in 2017

Notable trends



The most reported incident type in 2017 was phishing & credential harvesting.



There was a spike in ransomware reports during the Wannacry and NotPetya ransomware campaigns in Q2.

Check out www.cert.govt.nz and subscribe to our updates

certnz 

Quarter One (Q1 2018)(1 Jan – 31 Mar)



506 incident reports

were made in Q1, the highest number received in a quarter since CERT NZ was established.



\$3 million in losses

Significant losses continue to be reported, with almost \$3 million in losses in Q1. 45% of incidents reports show some form of loss.



Increased vulnerability reports

Vulnerability reports increased considerably, with twice as many received in Q1 2018 as in Q4 2017.



New ransomware variants

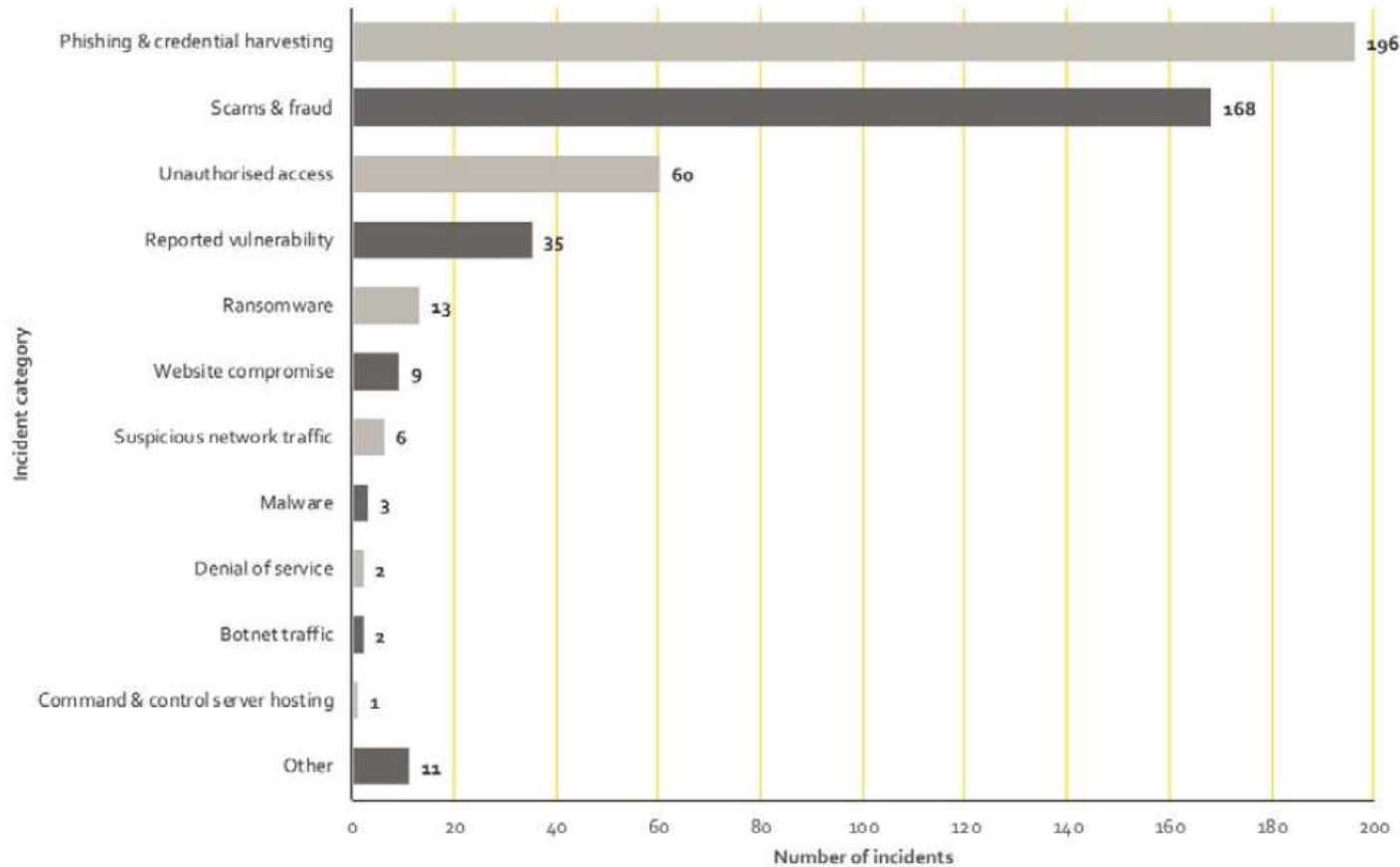
We received reports of two new ransomware variants – Rapid and David.

Q1 number of incidents

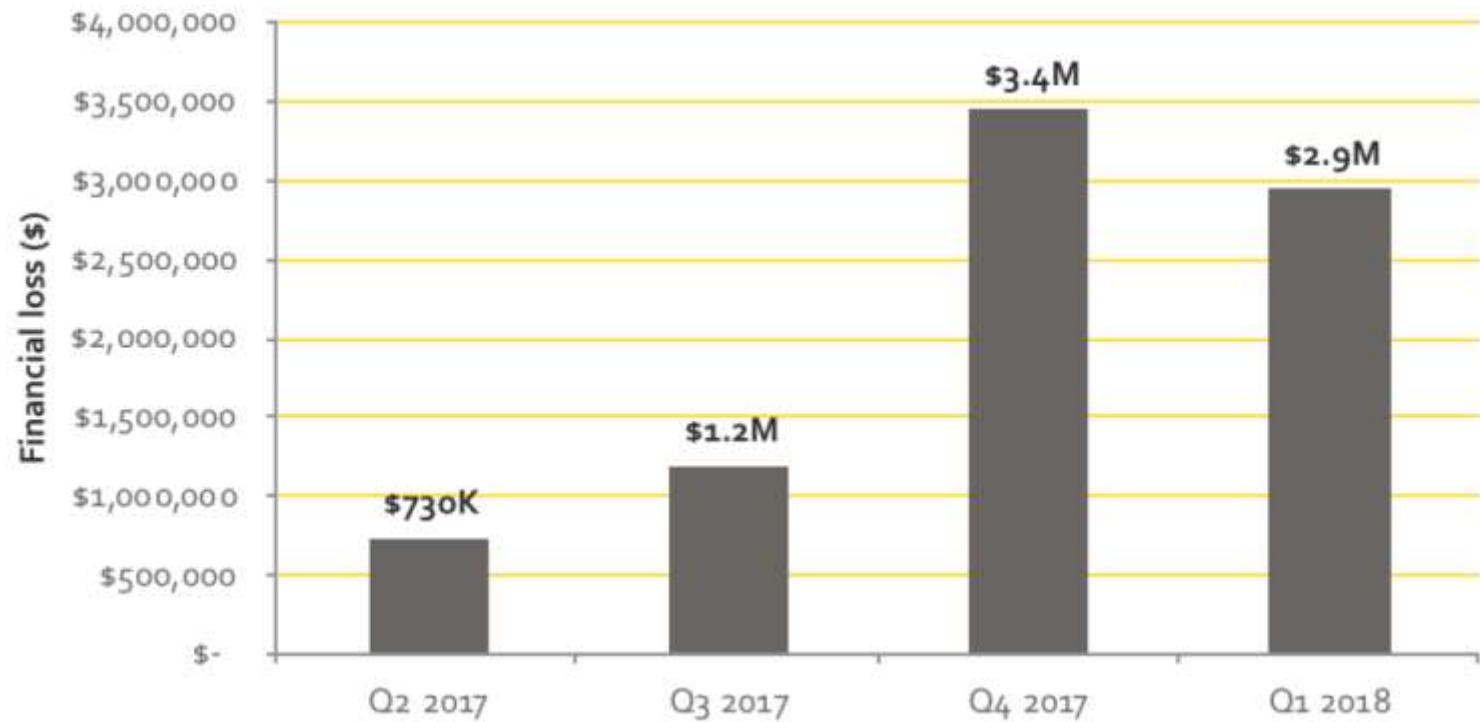
506 incidents reported

318	responded to directly by CERT NZ
182	referred to NZ Police
5	referred to Netsafe
0	referred to National Cyber Security Centre
1	referred to Department of Internal Affairs

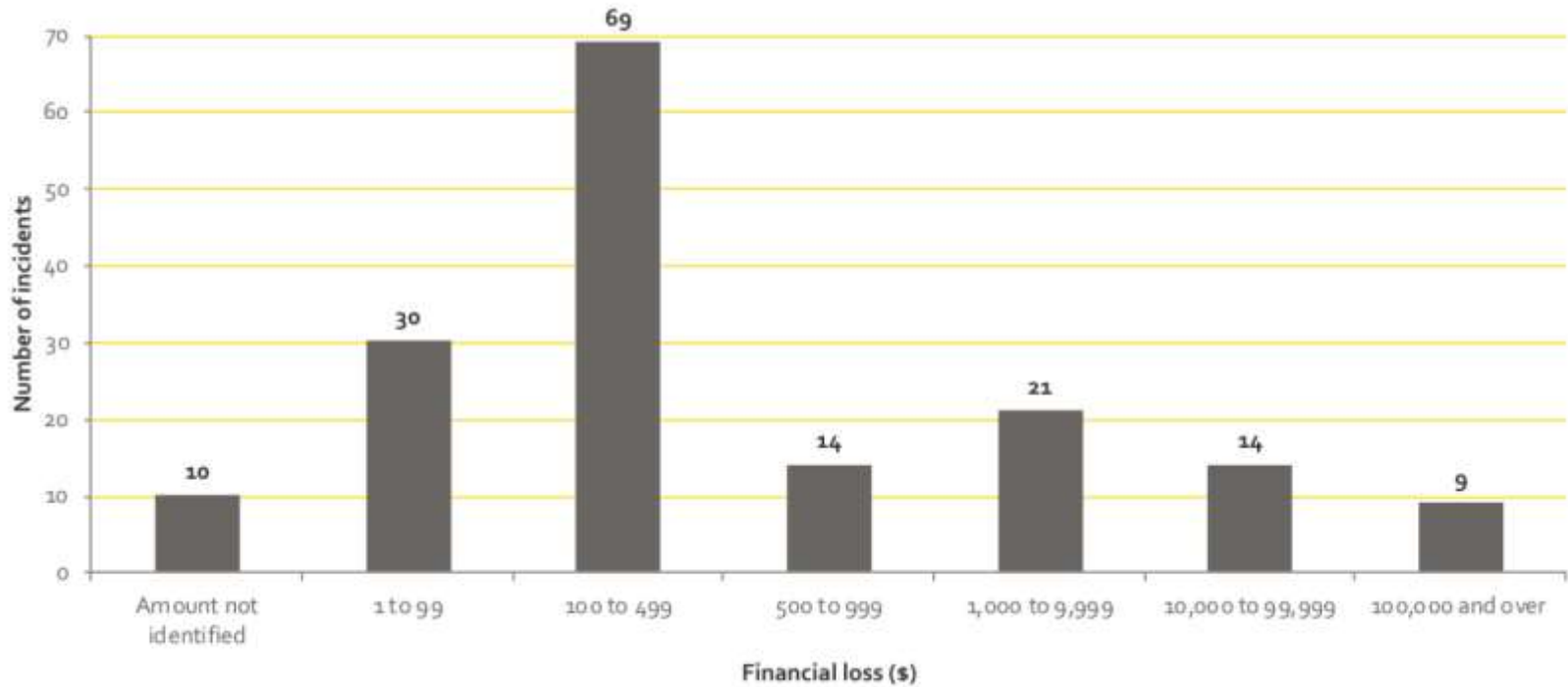
Breakdown of incident category



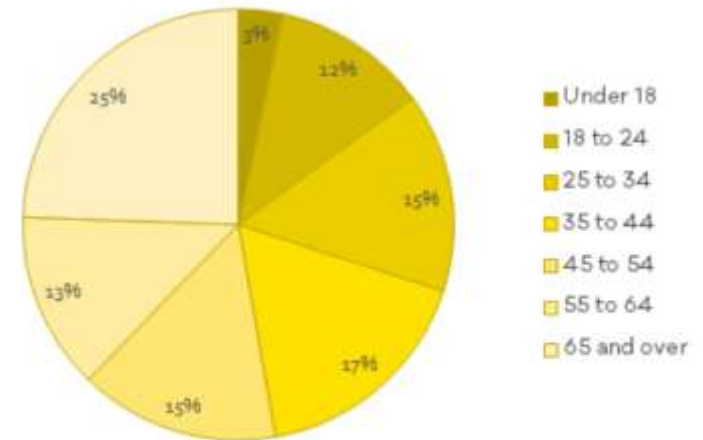
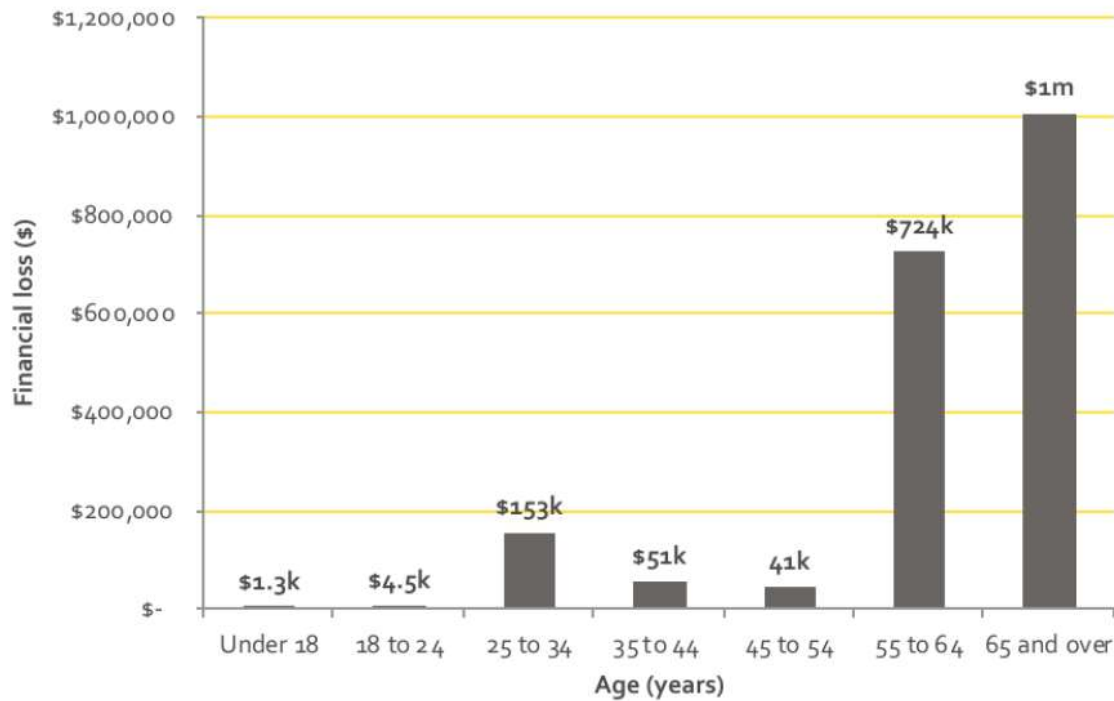
Total financial losses



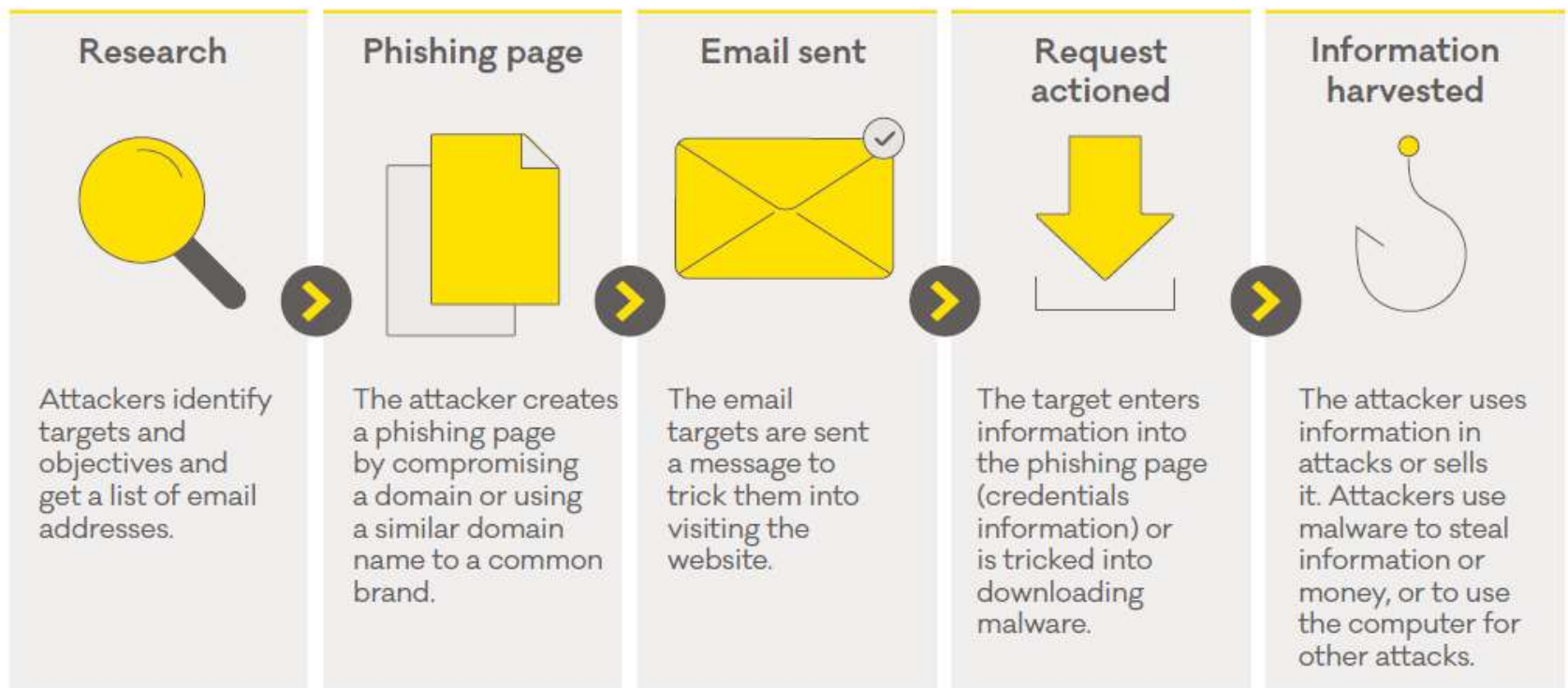
Distribution of direct financial loss



Age data



Phishing campaigns



CERT NZ's advice on cyber security & social media

- Look after your login and password details
- Understand your privacy settings
- Be smart about making friends
- Remember that what goes online, stays online
- Close your old accounts down
- Watch out for scams

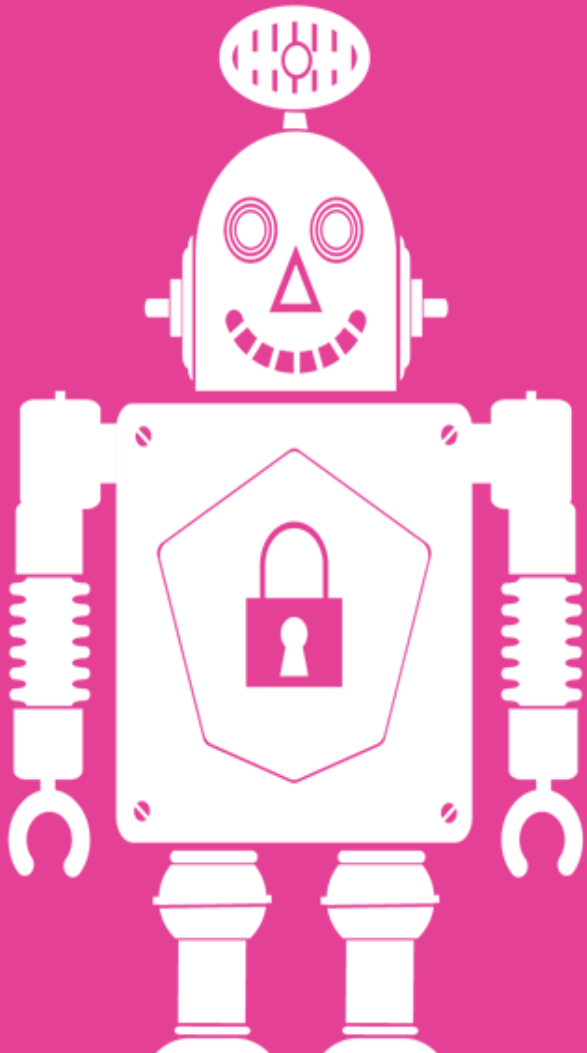


Cyber Smart Week 2017



- ✓ New Zealand's cyber security awareness week
- ✓ See www.cert.govt.nz/cybersmart for more information and resources

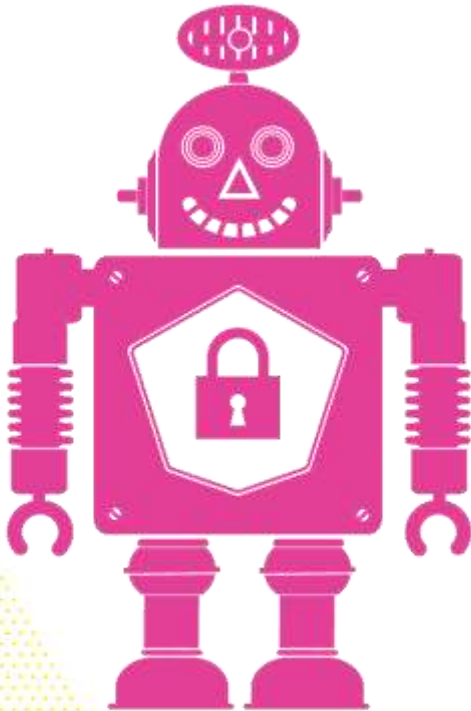
/// Step 1 to building your cyber defence



Change your password

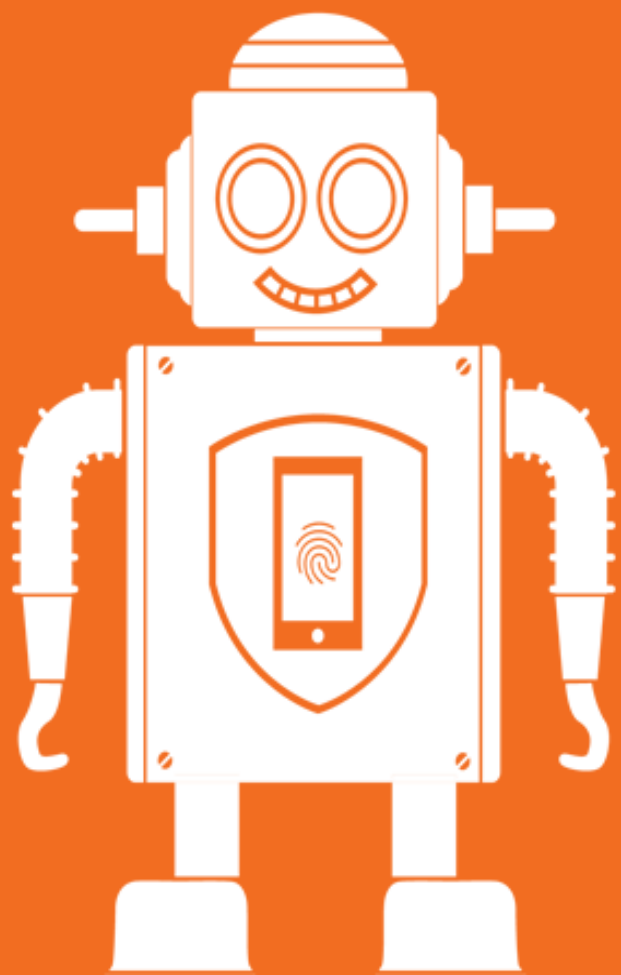
Make your passwords long and strong, and have a unique password for each online account.

Change your password



- / Change your password
- / Make your passwords long and strong
- / Make each password unique
- / Keep your passwords safe
- / Don't use personal information

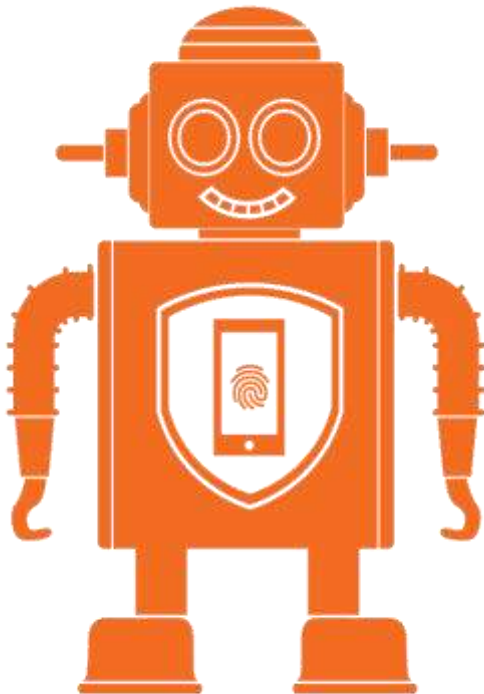
/// Step 2 to building your cyber defence



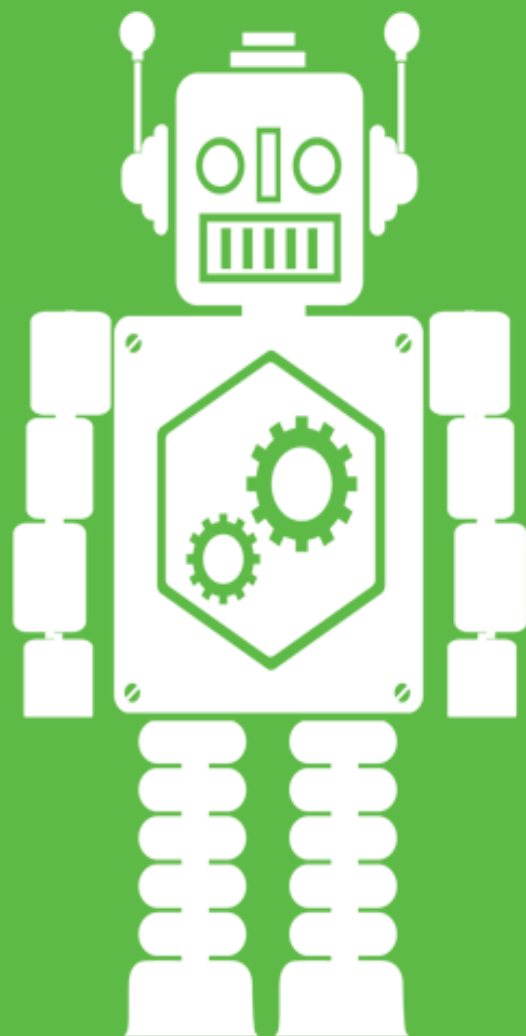
Turn on 2FA

Two-factor authentication, or 2FA, is like having a second lock for your door. It's often a password, and something else, like a code.

Turn on Two-Factor Authentication (2FA)



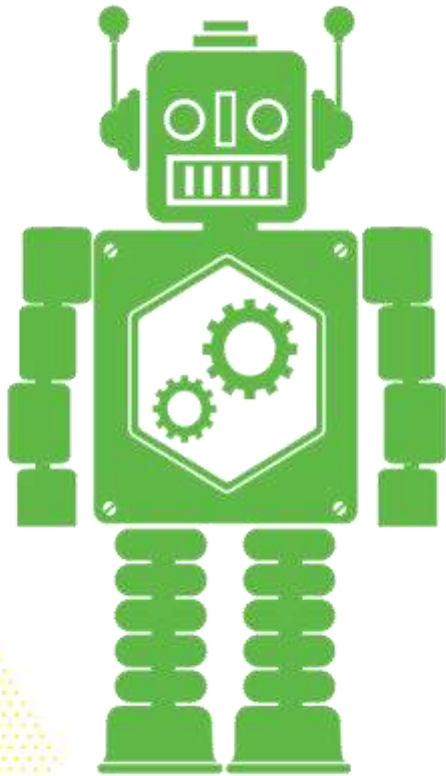
- ✓ Enable two-factor authentication (2FA)
- ✓ Turn on 2FA for all of your important accounts
- ✓ Keep your phone, device or hardware tokens safe
- ✓ Watch for rogue codes



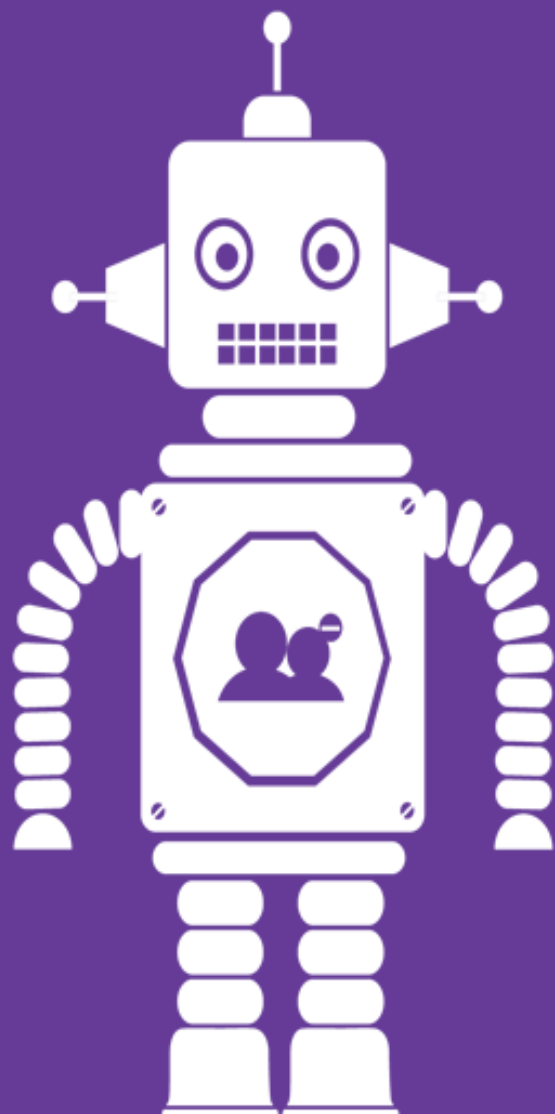
Update your OS

Keeping your operating system, or OS, up to date is a really good way to defend against bugs and viruses.

Update your Operating System (OS)



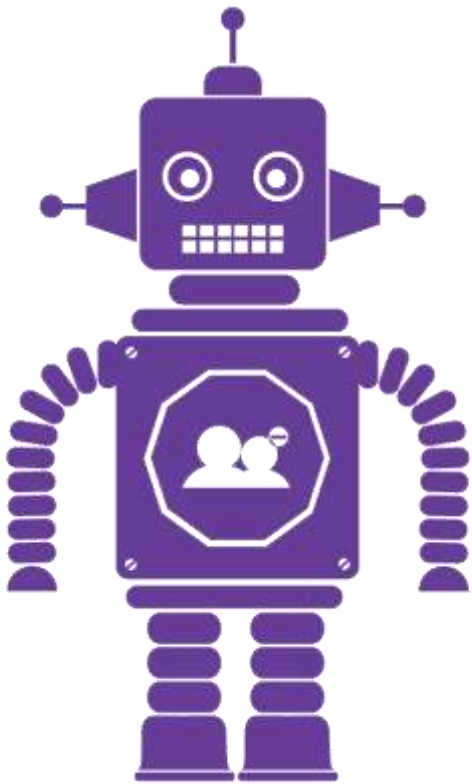
- Update your operating system (OS)
- Updating your OS can protect against cyber-attacks
- Set and forget
- Only keep the apps you need



Check your privacy settings

Set your privacy settings so you know exactly who can see what you post on social media.

Protect your privacy



- / Check your privacy settings
- / Know who your friends are
- / Oversharing much?
- / All about me



/// How you can leverage
CERT NZ

Quarterly Reporting

- ✓ New Zealand **threat landscape statistics and information**
- ✓ Free to use as resources for your customers, staff, management and executive
- ✓ Provides awareness of the impact of incidents, and the prevalence of threats
- ✓ Can help with business cases for protection measures
- ✓ Read our Quarterly Reports at www.cert.govt.nz/about/quarterly-report



CERT NZ's Critical Controls 2018

- Use as an independent, credible source to reinforce or focus your prevention messaging (for your business customers or for your own business)
- Contains ready-made, actionable advice, based on what our data says would have kept affected organisations safe
- Also helps to put your cyber security aims in to a broader context
- Download at www.cert.govt.nz



A wealth of free, expert information

- Ready-made content on common cyber security threats with practical info and advice
- Includes resources like infographics and videos
- Free at www.cert.govt.nz *

* Available to copy, distribute, adapt for any purpose other than commercial purposes under a [Creative Commons licence](#)



Cyber Smart Week

8-12 October 2018

New Zealand's cyber security awareness week

- ✓ A nationwide, galvanising platform to help your staff and customers make an impact on their online safety
- ✓ The theme for this year's campaign is **"Protect your online self"**
- ✓ Leverages the collective strength of CERT NZ's stakeholders to amplify messages
- ✓ Opportunity to be visibly associated with the campaign
- ✓ See www.cert.govt.nz/cybersmart
- ✓ Or e-mail cybersmart@cert.govt.nz to register your interest

Stay up to date

- Subscribe to **alert and advisory emails** on our website
www.cert.govt.nz/subscribe
- Subscribe to **quarterly updates** on our website
www.cert.govt.nz/subscribe
- Follow us on **Twitter@CERTNZ**
- Register your interest in **Cyber Smart Week 2018**, e-mail us at
cybersmart@cert.govt.nz

CERT NZ Contacts

- General enquires:
info@cert.govt.nz
- Cyber Smart Week enquires:
cybersmart@cert.govt.nz
- To report an incident:
www.cert.govt.nz or
phone **0800 CERT NZ**

Thanks.